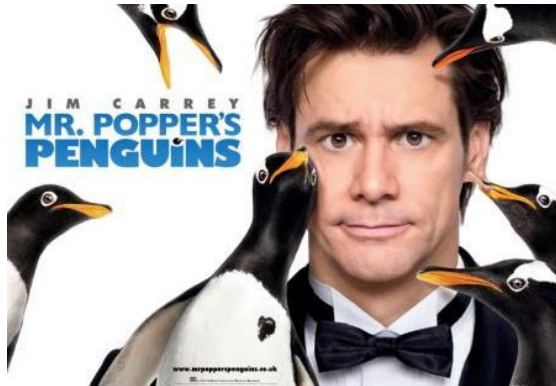


Calling all film buffs!

Dimensions have joined forces with ODEON to host an autism friendly screening of new release, Mr Popper's Penguins, in cinemas across the country.

We want as many people as possible to come along so that we can make film screenings aimed at people with autism or learning disabilities a regular event.



When is the film on? The screenings are at 11am on Thursday 11th August.

Which cinemas are showing the film? A full list of all of the 30+ cinemas involved is available on our website: www.dimensions-uk.org/autism

What makes the screenings autism friendly?

- The lights will be on low
- The volume will be turned down
- You'll be able to take your own food and drinks
- You'll be able to move around the cinema if you like.

Support workers/carers can attend for free with a CEA card.

To find out more about how we support people with autism visit: www.dimensions-uk.org/autism



Derbyshire Autism Services Group

28D HIGH STREET RIPLEY, DERBYSHIRE DE5 3HH

Tel: 01773 741221 email dasg@autismsupport.co.uk

Web address www.autismsupport.co.uk

Registered Charity Number 1105525 Company Number 5185463

Newsletter July 2011

**PLEASE NOTE AS FROM THE BEGINING OF JULY
DASG NEW CLOSING TIME!**

Monday to Thursday - 9am-4:30pm & Friday 9am-4pm

Fundraising Evening



Clairvoyant Evening

with

Ann Anderson

&

David Williams

Saturday September 17th

7:30pm - 10:30pm

at

Ripley Field Terrace, DE5 3HH

(just behind the Pear Tree Pub, at the bottom of the car park)

£10 a ticket (inc. Refreshments)

Please contact the office on 01773 741221 for tickets

Our **BIG THANK YOU'S:**

Kerry Baldwin raised £56.40 – by selling Teddy Tombola tickets, also a big thank you to Howitt primary school for their kind donation.



Derbyshire Autism Staff, who raised £255 by holding a coffee morning, selling cakes and other various stalls.

.....*thank you for your support!*



The DASG is still looking to sponsor runners, to raise funds for us by entering the **BRITISH 10K LONDON RUN** on Sunday 10th July. The race starts at 9:35am. If anyone is interested, please call the office on 01773 741221 and we will register you for the event. Thank you.



DCitC Disability Football Coaching SUMMER HOLIDAYS 2011

All of the sessions provide young players with disabilities the opportunity to participate in the nations favourite game and improve their skills, confidence and motivation to move forward within the game. Activities are designed to meet the needs of each individual, working on fundamental movement skills, football skills and match play.

Our sessions also provide the opportunity to develop social skills within a fun, safe environment under the supervision of qualified and knowledgeable coaching staff.

Derby City		
Mickelover Country Park Social Club, DE3 0UL (6-14years) Tuesdays 9.30-10.30am 2nd, 16th, 30th August	Powerleague Pride Park, DE24 8BW (6-14years) Wednesdays 9.30-10.30am 27th July, 3rd, 10th, 17th, 24th, 31st August	Derby University Kedleston Rd, DE22 1GB (6-14years) Fridays 9.30-10.30am 29th July, 12th, 26th August
Derbyshire Dales	Amber Valley	South Derbyshire
Whitworth Centre Matlock, DE24 2EQ (6-14years) Mondays 9.30-10.30am 8th, 15th, 22nd August	Thorntons Playing Fields Derwent Street, Belper, DE56 1UK (6-14years) Tuesdays 9.30-10.30am 26th July, 9th, 23rd August	Pingle School Coronation St, DE11 0QR (6-14years) Fridays 9.30-10.30am 12th, 19th August, 2nd September

14 years + Powerleague, Pride Park, DE24 8BW
Wednesdays 12.30-14.30pm 27th July and 3rd, 10th, 17th, 24th, 31st August



One hour sessions are £3 and two hour sessions are £5

For more information call the Coaching Hotline: 01332 667575
www.dcitcommunity.com • Follow us on Facebook at Derby County In The Community

Disability Football Development Officer Derby County in the Community, Pride Park Stadium, Pride Park, Derby, DE24 8XL T: 01332 667575 M: 07931996681
E: sam.turner@dffc.co.uk W: www.dcitcommunity.com

The content and information supplied by other organisations presented in this Newsletter are the sole responsibility of those organisations and must be checked with them. If you have received this Newsletter in error or no longer wish to receive it, please contact the office on 01773741221 to cancel it.

ACTIVITIES & EVENTS

THINGS TO DO

TRAMPOLINING SESSIONS AT RIPLEY

For young people with additional needs.

Qualified and experienced coaches.

General supervision to be provided by parent/carer.

Ripley Leisure Centre,
Derby Road, Ripley.

Saturday at 11.15 am, only
£4.00 per session.

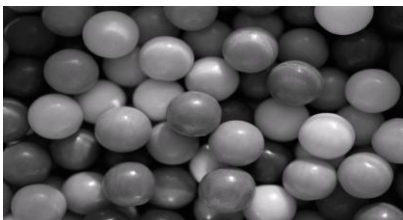
For an application form please
contact Vanya Currell.

Telephone Ripley Leisure
Centre

On 01773 514727 and leave a
message for Tracy to call you.

GENESIS SOFTPLAY

10.00 AM – 11.00 AM
10th & 24th July



PLACES TO GO



Ilkeston 1st Bowl DASG members
can bowl at the reduced cost to them
of £2 each, per game, Monday –
Sunday at anytime



Dimensions Disco - Over 18s

only. Disco for people with learning
disabilities at **The Venue Night Club**,

Abbey Street, Derby. The 1st

Monday of the month from 7pm-

10:30pm. Contact: Shelly Burton on
07721 384920 or

michelle.burton@dimensions-uk.org

Just Good Friends - Over 18s

only. Night club event for people
with learning disabilities now at

Escapade Night Club, Chesterfield,

from 7pm till 11pm, Cost £5 per

person for more information please

Contact: Trish 07599 076866 or

07599 076868.

A not-for-profit company from  money

Virgin Money Giving

Now Live!!!

Anyone thinking of raising money for the DASG can now do so at
<http://uk.virginmoneygiving.com/giving/>

Just entre Derbyshire Autism Services Group in the "Find a
Charity" box and click through the link to "Start Fundraising" or
"make a donation", there will be a step-by-step guide on how to
do this, **it is really that easy! and also an excellent way of
making a donation instead of sending a raffle prize etc.**



FUNDRAISE ON EBAY.CO.UK

Help raise money for the DASG by donating through eBay sales.

Log on to "my eBay"

Click "account tab"

Click "Donation account" (left hand side)

Click "my favourite charities" (left hand side)

Search for Derbyshire Autism Services Group

Click "save as favourite"

How it works

1. WE HAVE REGISTERED WITH eBay

2. You list an item on eBay, choosing a percentage of the sale price
to donate.

3. If the item sells, the seller is paid, and posts the item to the buyer,
as usual.

4. MissionFish collects the donation from the seller, claims Gift Aid
on our behalf, and passes the money on to our charity, making a
small deduction to cover costs.

Cash donations through PayPal

You can also make donations to the DASG, through PayPal.

We are just waiting confirmation of registration!

ADULT ACTIVITY GROUPS

ADULT ACTIVITY GROUP - DERBY The Group will be going to MegaBowl, Sinfin - meeting there at 6:45pm.	Wednesday 13 th July
ADULT ACTIVITY GROUP – CHESTERFIELD Meet outside the Pomegranate Theatre, Chesterfield at 6pm. For more information please call the office, or contact Nikki on 0777 2063325	Tuesday 5 th July

Please call the Office as soon as possible to book your place on: 01773 741221. The cost for any of the **Adult Activity Groups is £5.00** to be paid in advance at the DASG office, Thank you

SUPPORT GROUP MEETINGS

AMBER VALLEY PARENTS SUPPORT GROUP DASG Office 28D High Street, Ripley from 7.00pm – 9.00pm	Wednesday 6 th July
BOLSOVER PARENTS SUPPORT GROUP The Blue Bell Pub Bolsover from 7.00pm – 9.00pm	Tuesday 19 th July
BUXTON (High Peak Autism & Asperger's Support Group) Grapevine Café, 15 Scarsdale Place, Buxton Market Place (if the Grapevine Cafe is not available please cross the road to the Peaks & Dales Advocacy where alternative arrangements to use one of their rooms will have been made) from 10.00am – 11.45am	Monday 11 th & 25 th July
CHESTERFIELD PARENTS SUPPORT GROUP Ability (Mencap) Centre Victoria Street, Chesterfield. from 7.00pm – 9.00pm	Thursday 14 th July
DERBY PARENTS SUPPORT GROUP Looking for an alternative venue, anyone wanting to meet.	Contact Suzy on: 07545240242



Accessible Holidays - Summer Offers

Summer's here and it's time to book your summer break

At The New Mayfair, you can enjoy a stylish and relaxing break in the UK's number one beach resort with the assurance your every need is catered for.

The New Mayfair Hotel offers a **fully accessible holiday** solution, From **accessible travel** to and from your home on our brand new mini bus, **free equipment hire** including hoists, commodes and bed rails, fully **accessible rooms** with **full-en-suite shower room facilities** and a selection of rooms including over-head tracking, electric raiser beds and sea views.

We're here to make your holiday perfect and can meet even the most special requirements, to find out how we can help you fulfil your perfect holiday experience call 01253 347543 or visit www.thenewmayfair.co.uk



Derbyshire Carers Breaks Scheme

Bowling-Evening

Date: Friday 22nd July

Time: 7.00 – 9.00 PM

Cost: Free

Venue: Chesterfield, Bowl, Storforth Street, Chesterfield S40 2T

Booking: Please call Derbyshire Carers Association for more information and to book a place on 01773 743355 or email michaela@derbyshirecarers.co.uk

This event is available to Carers who are registered with their GP in Derbyshire County

DASG Grand Summer Raffle

To all carers, parents and professionals

DASG have organised a 'Grand Summer Raffle'. There are loads of fantastic prizes up for grabs from days out in and around Derbyshire and gift vouchers to DCFC match day tickets. With over 20 prizes up for grabs, we are hoping you will support us by selling a book of raffle tickets on our behalf. Each book contains 5 tickets, each priced at £1 per ticket.

All sold tickets along with the money (preferably sent in as one cheque) as well as any unsold tickets should kindly be returned to the office by Monday 25th July 2011. Please have a think if you could sell more than one book at any groups you attend i.e. The WI, sports clubs, church, Guiding/Scouting groups, slimming clubs etc as we would greatly appreciate your support in raising as much money as possible.

If you are able to sell extra books, please let us know so we can send you some. Likewise, if you receive the newsletter via email and can sell some tickets for us, please let us know how many books you require.

If anyone has any free time on their hands and would like to approach their local supermarket on our behalf to have a stand in the entrance for a morning or afternoon, we would be very happy to support you in doing this by providing the relevant information to the supermarket and also by asking some of our dedicated volunteers for their support. Please let us know if you plan to do this so we can ensure you have the relevant details to take with you.

For those of you who receive a regular service from a staff member or volunteer, you may receive a book via them. Please do not feel obliged to sell both books, but please return all unused tickets along with those sold.

Many thanks in advance for your continued support

Toni Shepherd

Volunteer Coordinator



LONG EATON PARENTS SUPPORT GROUP

The Grange Primary School, Station Road, Long Eaton from **1.30pm – 2.30pm**

NEWS!!!

Long Eaton support group also has a **Facebook** page called: Long Eaton Autism Support Group

Contact Suzy on:
07545240242

MATLOCK PARENTS SUPPORT GROUP

At The Tavern, Tansley from 7.00pm – 9.00pm

Due to unforeseen circumstances, Margaret is unable to take this meeting at this time, anyone wishing to meet will be made welcome at any of the other groups, or can call the office for help & support

SWIMMING TIMETABLE

HEANOR LEISURE CENTRE

Hands Road, Heanor DE75 7HA

Sat 9th & 23rd July
(6.15pm-7.15pm)

As part of the need to make cuts within our organisation, we are sorry to announce that from June, Heanor Swimming group will now be changed to a fortnightly activity.

LONG EATON

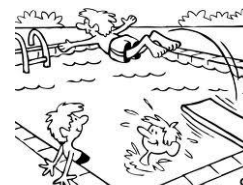
West Park Leisure Centre,
Long Eaton.

16th July
(5.30pm – 6.30 pm)

MATLOCK SWIMMING POOL

Imperial Road Matlock

30th July
(4.00pm–5.00pm)



It is always advisable to contact your choice of Swimming Pools to check that the session is still on, as sometimes the Pool has to be cancelled at short notice, due to unforeseen circumstances.

Horse Riding



Please call the Office on 01773 741221 if you would like to book a place. Horse riding is booked on a first come first served basis. All riding fees are a minimum donation of £5 per rider.

Saturday July 2nd, 16th & 30th

Chesterfield - Alton Riding School.

A maximum of 8 Horses/Ponies can be booked for ½-hour sessions

Saturday afternoon, all sessions start at 1.30pm.

Sunday July 3rd, 17th & 31st

Alfreton – Parkside Stables, Alfreton

Ponies can be booked for ½-hour sessions **Sunday morning, all sessions start at 11.30am**

For **Alton**, Chesterfield **Heidi Peet** or **Esther Edwards** will be collecting the riding fees and for **Parkside**, Alfreton please would you pass the fees to **Maggie Fox**. Alternatively, cheques can also be sent to the D.A.S.G office. Please would you make it clear whom the payment is from.

Priority is given to children with an ASC, however, if capacity allows siblings will be accommodated. Please arrive 15 mins before start time.

Shop online? When shopping online, why not visit

help us whilst you shop...

Shop2fundraise,

<http://www.shop2fundraise.co.uk/?orgID=404594>

Select the **Derbyshire Autism Services Group** as your charity & follow the instructions. Retailers will donate a specific percentage to our charity and it will not cost you a penny!



Free Workshop for parents and professionals

Book your place now!

Post-16, autism and severe learning disabilities – transition to adult life
Going beyond the residential school gate

Thursday 14th July 2011, Nottingham, 9.30am to 2.30pm

- Sex and relationships
- ASC and mental health issues
- Individualised programmes: predictability and flexibility
- A parent's journey – my child and transition

Who should attend?

Parents, Educationalists, SEN professionals, social workers and commissioners

Venue

Jury's Inn Nottingham Hotel, Station Street, Nottingham, NG2 3BJ

How can I book my place?

By filling in the details on attached flier

By registering online at www.cambiagroup.com

or by phone on: **0800 288 9779** Any queries please call 0800 288 9779

For more Summer Activities, why not take a look at:

www.visitpeakdistrict.com

or call: 01773 841485

www.derbycitypartnership.co.uk

or call: 01332 258509